

Ländler

in B.

Zither 1.

Ländler

Zither 1.

*

* Sie sollen keine Finger auf der ~~...~~ A Taste zu spielen.
murmur

Handwritten musical score, first system. Treble clef, key signature of two flats. Fingerings: 2, 4, 1, 1, 1, 4. Dynamics: *1mo*, *2do*. Fingerings: 2, 3, 2, 3. A red 'p' is written below the second measure. A 'd' is written below the first measure.

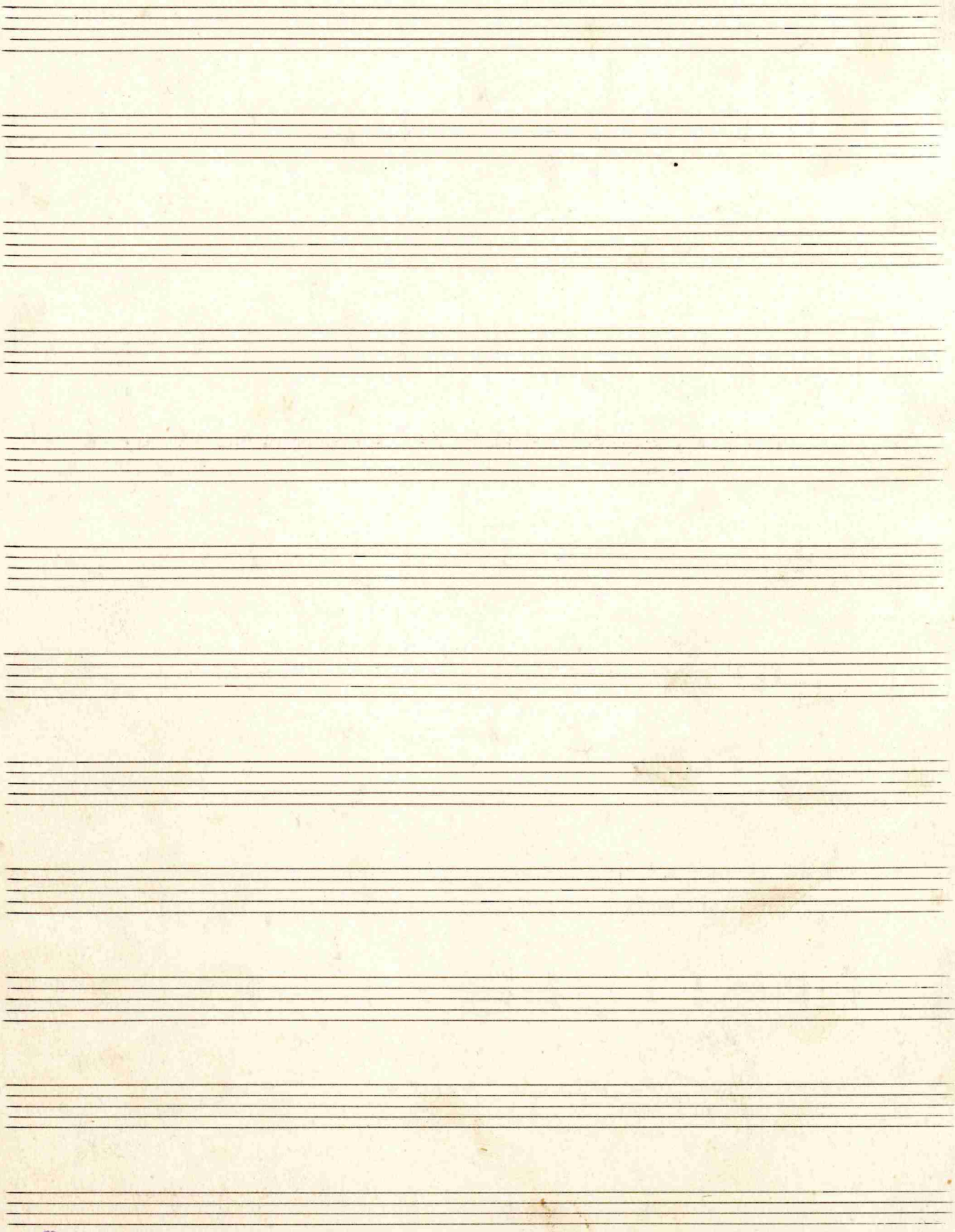
Handwritten musical score, second system. Treble clef, key signature of two flats. Fingerings: 3, 3. Dynamics: *moll*. A 'd' is written below the first measure.

Handwritten musical score, third system. Treble clef, key signature of two flats. Fingerings: 2, 3, 4. Dynamics: *moll*. A *rit a* marking is present. A red star is above the final measure.

Handwritten musical score, fourth system. Treble clef, key signature of two flats. Fingerings: 1, 2, 3, 4, 2, 3, 1, 2, 1, 2, 4, 2, 4, 2. Dynamics: *1mo*, *2do*, *rit*. A red *trous* marking is present. A blue 'a' is written below the fifth measure.

Handwritten musical score, fifth system. Treble clef, key signature of two flats. Fingerings: 3, 4, 2, 1, 2, 3, 4, 1, 2, 3, 4, 1. A red 'f' is written below the fifth measure. A blue 'c' is written below the first measure.

Handwritten musical score, sixth system. Treble clef, key signature of two flats. Fingerings: 2, 3, 1, 2, 4, 2, 4, 2, 3, 4, 1, 2. Dynamics: *1mo*, *2do*. A blue 'a' is written below the first measure, and a blue 'c' below the third measure.



Ländler

in B

Lischer II.

Ländler.

Zither 2.

Handwritten musical notation for the first system. It consists of two staves. The upper staff contains a melodic line with a dynamic marking *f* and a red underline. The lower staff contains a bass line with a dynamic marking *mit p* and a red underline.

Handwritten musical notation for the second system, consisting of two staves with a melodic line on top and a bass line on the bottom.

Handwritten musical notation for the third system. It features two staves. The upper staff has a melodic line with first and second endings marked "1mo" and "2do". The lower staff has a bass line with a dynamic marking *mit.* and a red underline.

Handwritten musical notation for the fourth system, consisting of two staves with a melodic line on top and a bass line on the bottom.

Handwritten musical notation for the fifth system. It features two staves. The upper staff has a melodic line with first and second endings marked "1mo" and "2do". The lower staff has a bass line with a dynamic marking *p* and a red underline.

Handwritten musical notation for the sixth system, consisting of two staves with a melodic line on top and a bass line on the bottom. The word *c moll* is written at the bottom of the system.

Handwritten musical notation for the first system, featuring a treble and bass clef with various notes and rests.

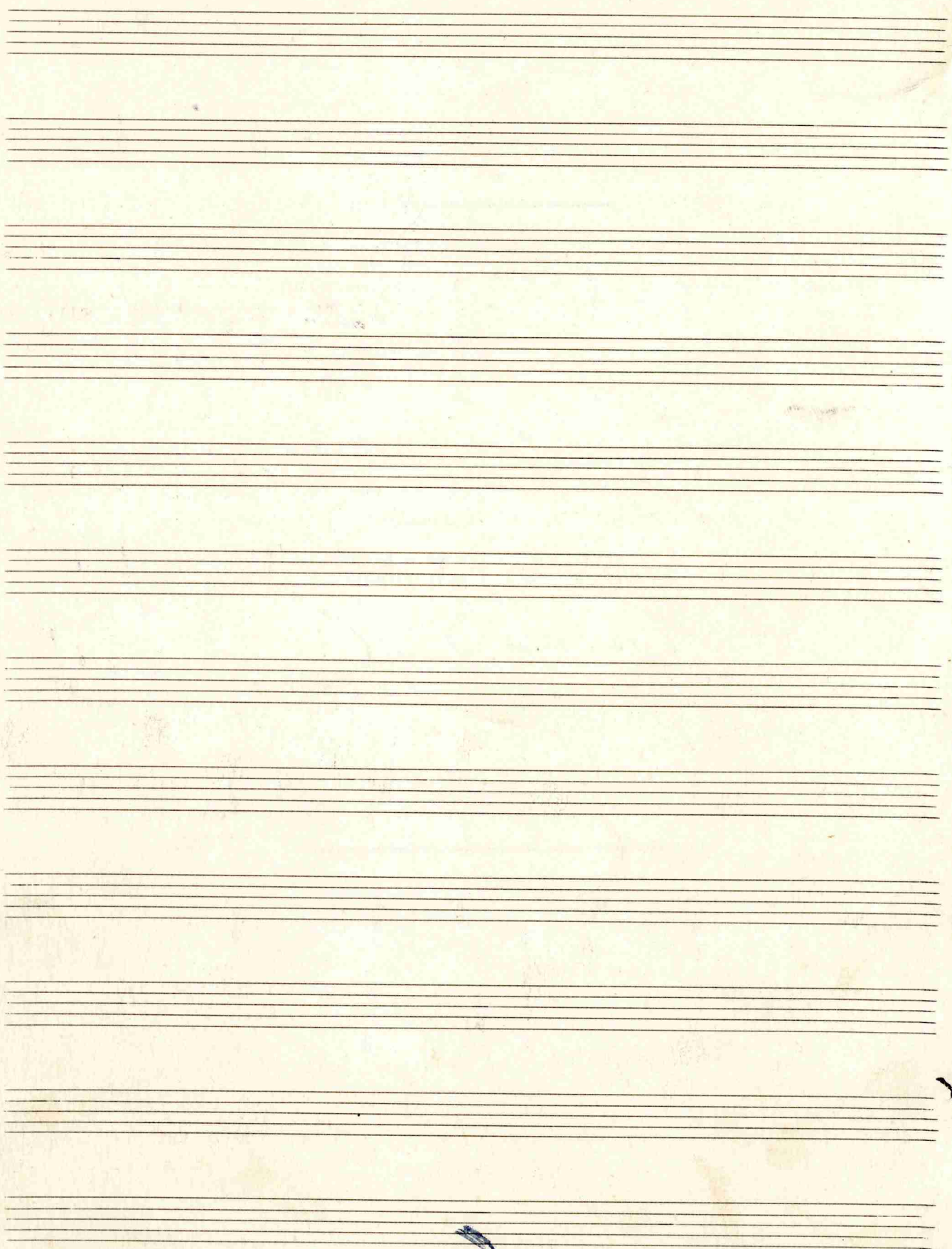
Handwritten musical notation for the second system, including dynamic markings like "1mo", "2do", "mf", and "234". A red handwritten note reads "3. Lage) almost lumpy from m.p." with a sharp sign.

Handwritten musical notation for the third system, showing a treble and bass clef with notes and rests.

Handwritten musical notation for the fourth system, showing a treble and bass clef with notes and rests.

Handwritten musical notation for the fifth system, including dynamic markings "1mo" and "2do", and a "2.2.32." marking.

Handwritten musical notation for the sixth system, showing a treble and bass clef with notes and rests.



Ländler

in B

Alzither

Ländler

Altsitzer.

The first system of the handwritten musical score consists of two staves. The upper staff is in treble clef and the lower staff is in bass clef. The key signature has two flats (B-flat and E-flat), and the time signature is 3/4. A red '4' is written in the first measure of the bass staff. A double bar line is present in the fifth measure, with the red annotation 'rit. p' written above it.

The second system continues the piece with two staves. The upper staff contains a melodic line with eighth and sixteenth notes, while the lower staff provides a harmonic accompaniment with chords and single notes.

The third system shows further development of the melody and accompaniment. The upper staff features a series of eighth notes, and the lower staff continues with a steady accompaniment.

The fourth system includes a first ending bracket labeled '1 mo' and a second ending bracket labeled '2 do'. A red 'rit.' is written under the first ending, and a red 'f' is written under the second ending.

The fifth system continues the musical piece. The upper staff has a melodic line with some purple ink corrections or markings. The lower staff maintains the accompaniment.

The sixth system concludes the piece. It features a first ending bracket labeled '1 mo' and a red 'p' written below the final measure.

Handwritten musical score, first system. Treble and bass clefs. Time signature 2/8. Includes notes and chords. A *ff* dynamic marking is present at the end of the system.

Handwritten musical score, second system. Treble and bass clefs. Includes notes and chords.

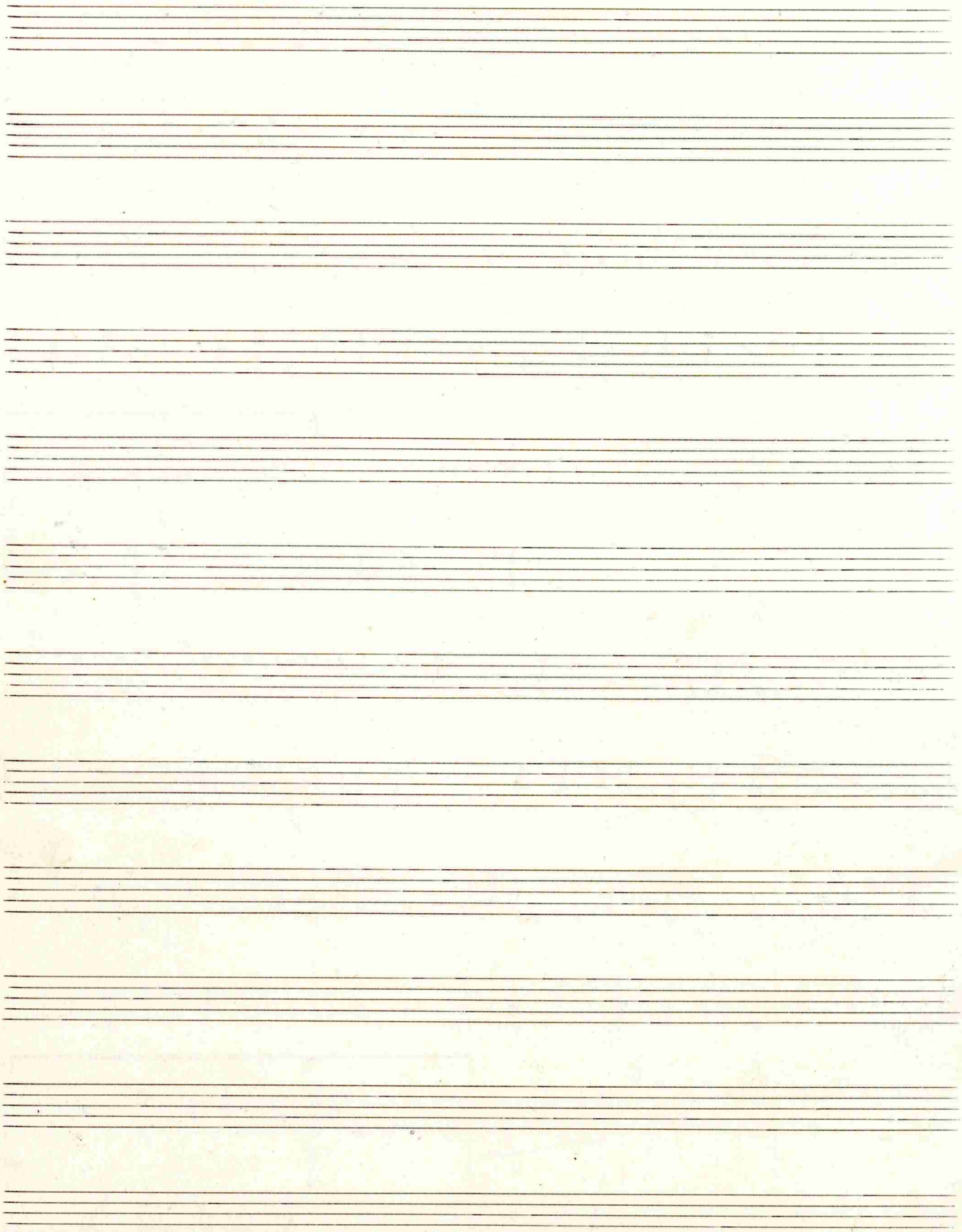
Handwritten musical score, third system. Treble and bass clefs. Includes notes and chords. A *ff* dynamic marking is present. A red handwritten *f* is written above the final measure. A red handwritten note *admodum* is written to the right of the system.

admodum
longior

Handwritten musical score, fourth system. Treble and bass clefs. Includes notes and chords. Fingerings 1, 2, 1, 2, 2 are indicated above the treble staff.

Handwritten musical score, fifth system. Treble and bass clefs. Includes notes and chords. Fingerings 1, 2, 1, 2 are indicated above the treble staff.

Handwritten musical score, sixth system. Treble and bass clefs. Includes notes and chords. A first ending bracket labeled *1 mo* and a second ending bracket labeled *2 do* are present.



Ländler

in B.

Gitarre.

Ländler in B

Gitarre.

Handwritten guitar tablature for 'Ländler in B'. The score consists of 11 staves of music. The notation includes notes, rests, and chord symbols. Chord symbols are written in black ink, with some notes in red ink. The key signature is B major (two sharps). The time signature is 3/4. The piece is marked with a 'p' (piano) dynamic. The notation includes various chord symbols such as 'a', 'c', 'd', 'es', 'a', 'c', 'cis', 'd', 'es', 'a', 'b', 'a', 'c', 'd', 'es', 'c', 'd', 'es', 'c'. There are also some red markings, including a 'p' and some notes. The piece ends with a double bar line and a repeat sign.

f *Amore lungo*

NB. Kapodaster auf dem 1. Bund aufsetzen.